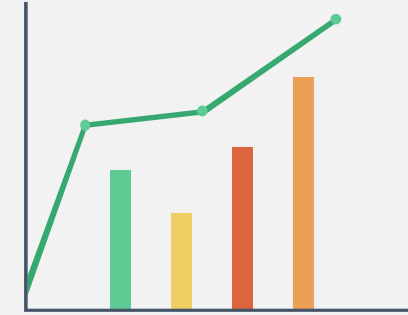
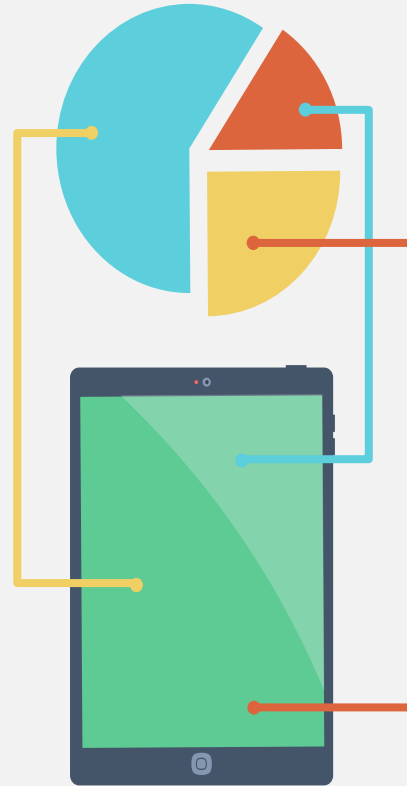


# MET-A-DATA

Custom Master Data Governance  
&  
Data Services Solution



**AIRDIT**



## Master Data Governance (Improve your Future Master Data)

Master data governance is the application of [data governance](#) in order to improve the management of a subset of data called [master data](#). Master data is the core data domains that you use to run a business or organization. For example, you might buy *materials*, from *suppliers*, to build *products*, that you sell to *customers*, and deliver those products with *partners*. Having accurate and consistent material, supplier, product, customer and partner data helps you improve the efficiency and accuracy of your processes such as order to cash, procure to pay, and record to report.

## Data Services (Improve your Existing Master Data)

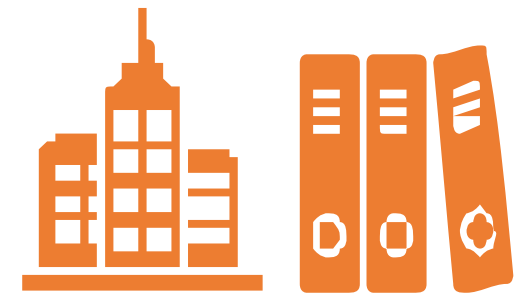
Data is gold. Often, it is a company’s most valuable asset. But to get the most out of their data treasure, especially when these massive volumes are comprised of countless heterogeneous sources, companies need to establish robust services to support clean, complete, non duplicate data.



**People:** Customer, Vendor, Business Partner, Person



**Places:** Address



**Things:** Materials, GL Accounts, Assets



● **Information in silos**



● **Different Views of same information**



● **No Data sharing Across Systems**



● **Inconsistent Information captured by multiple processes/ parties**



**Fragmented**

**Inconsistent**

**Duplicated**

**Incomplete**

Request (836)
Request Details

---

Search

VEND-708	Create	In Process
Vendor Master		
MDMUSER		
08.10.2020		

---

VEND-704	Create	In Process
Vendor Master		
MDMUSER		
07.10.2020		

---

VEND-703	Create	In Process
Vendor Master		
MDMUSER		
07.10.2020		

---

VEND-702	Create	In Process
Vendor Master		
MDMUSER		
07.10.2020		

---

VEND-701	Create	
Vendor Master		

Request: VEND-708

MDG Type	Created By	Overall Status
Vendor Master	MDMUSER	In Process

Vendor List(1)

Vendor List(1)

No items Selected

Vendor	Vendor Name	Account Group	Status
	lavanya	Z001	In Process

↑
↓
Duplicate Check
Edit
Approvals
Justification / Deviation

AIRDIT realized that Master Data Governance and Data Services solutions are necessary for all businesses. There are hardly any tools available in market which offers both functionalities. Pricing and Maintenance cost of existing market products is also a concern raised by many clients. We hereby present our very own license free Add-on built on ABAP stack to address your needs

- Custom Addon built on SAP Fiori for Master data Management/ Governance needs
- Clean Master Data empowers every business process
- Helps to standardize master data and incorporate rules to eliminate incorrect data
- Capability to identify duplicates inside loaded records and against existing records
- Collaborative workflows and notifications
- Maintain Master Data accuracy and consistency
- Video Presentation

### Introduction

<https://www.youtube.com/watch?v=a5hXE0Rh5Io>

### Features

<https://www.youtube.com/watch?v=xeVx8jEzFjE>



All Request (24)
Request Details

🔍
🔄
▼

**MAT-650**

Material Master

MDMUSER

01.10.2020

Create

**Mass Upload**

Request: MAT-650 🔗

MDG Type	Created By	Overall Status
Material Master	MDMUSER	<b>Mass Upload</b>

**Material List(6)**

Material List(6)

📄
🔍
▼

No items Selected

<input type="checkbox"/>	Material	Description	Material Type	Industry Sector	Plant	Status
<input type="checkbox"/>	MAT96171	Steel	ROH	H	2003	<b>Error</b>
<input type="checkbox"/>	MAT96172	Steel	ROH	H	2003	<b>Error</b>
<input type="checkbox"/>	MAT96173	Steel	ROH	H	2003	<b>Error</b>
<input type="checkbox"/>	MAT96174	Steel	ROH	H	2003	<b>Error</b>
<input type="checkbox"/>	MAT96175	Material Description (Short Text) - Ma	ROH	H	2003	<b>Complete</b>
<input type="checkbox"/>	MAT96176	Material Description Maximum 40 charac	ROH	H	2003	<b>Approved</b>

✔ Approve
✘ Reject
👤 Approvals
⚙ Justification / Deviation

Products which are flexible to get customized by Business users are need of the hour. Gone are the days when client was dependent on Vendor for each and every small requirement. We understand that Business Users might be willing to have additional screen control requirements compared to what's there in backend SAP ECC/ S4HANA system.

- Focus is on providing more control to business users compared to programmers
- Fully Configurable screen
- Department specific master data maintenance
- Additional Functional requirements can be configured
- Technical requirements can be configured
- UI is mobile compatible

All Request (24)
Request Details

**MAT-650**  
Material Master  
MDMUSER  
01.10.2020

Create  
**Mass Upload**

---

**MAT-649**  
Material Master  
MDMUSER  
01.10.2020

Create  
**Mass Upload**

---

**MAT-648**  
Material Master  
MDMUSER  
01.10.2020

Create  
**Mass Upload**

---

**MAT-615**  
Material Master  
MDMUSER  
01.10.2020

Create  
**Mass Upload**

---

**MATEXT-102**  
Material Master  
Extension

**Request: MAT-650**

MDG Type	Created By	Overall Status
Material Master	MDMUSER	<b>Mass Upload</b>

**Material List(6)**

Material List(6) Search...

No items Selected

<input type="checkbox"/>	Material	Description	Material Type	Industry Sector	Plant	Status
<input type="checkbox"/>	MAT96171	Steel	ROH	H	2003	<b>Error</b>
<input type="checkbox"/>	MAT96172	Steel	ROH	H	2003	<b>Error</b>
<input type="checkbox"/>	MAT96173	Steel	ROH	H	2003	<b>Error</b>
<input type="checkbox"/>	MAT96174	Steel	ROH	H	2003	<b>Error</b>
<input type="checkbox"/>	MAT96175	Material Description (Short Text) - Ma	ROH	H	2003	<b>Complete</b>
<input type="checkbox"/>	MAT96176	Material Description Maximum 40 charac	ROH	H	2003	<b>Approved</b>

✓ Approve
✗ Reject
👤 Approvals
⚖️ Justification / Deviation

In order to support On premise ECC and S4HANA customers we have opted SAP Traditional workflow to build our custom workflow framework. We are of the opinion that we will be able achieve any complex workflow requirements.

- **Deadline Monitoring:** Workflow automatically monitors deadline and takes appropriate action
- **Parallel Processing:** More than one approvers possible at single level
- **Escalation Process:** In case date is reaching deadline, workflow triggers escalation emails.
- **Substitution:** In case specific approvers are on vacation, substitutes can approve/reject workflow
- **Bulk Approval possible**
- **Workflow Log and History**
- **Comments**

# More Features

Request (30)

Search

Material Duplicate Data

Reference Material No	Material No	Material Description	Score
MAT96194	MAT96190	Steel	100
MAT96194	MAT95962	Steel	100
MAT96194	54134036	ClutchPlugSetM1300-21MIP1300SteelStrap	100
MAT96194	54134030	SupFrameSpringM130014 MIP1300SteelStrap	100
MAT96194	54134037	RetRing-LargeM1300-22MIP1300SteelStrap	100
MAT96194	12180228	HotRolledSteelSheet2.25x1 450x6800mm-ERSA	100
MAT96194	57001074	STEEL RACK	99
MAT96194	13610180	Buckets Steel	99
MAT96194	11405119	PALTA, M.Steel	99
MAT96194	57000481	Steel Tumbler	99

Cancel

Edit Approvals Justification / Deviation

## ● Duplication check

Users at each level can perform Duplication check. We use Fuzzy logic to decide duplicates. Duplication checks can be performed on Text and Numeric fields

## ● Data Services

Reports are available to provide health check for existing Master data. System provides reports on existing duplicates available in system.

## ● Critical Data

Certain Data is configured as critical. Changes against such data fields can trigger alerts to respective Users

## ● Attachments

Material Master sometimes needs Design document. Similarly Vendors and customer might have statutory document needs. Documents are managed in DMS.

## ● Reports and Dashboards

Admin Reports and Dashboards are available

## ● Notifications

Various Notifications such as Email, SMS available for each level of workflow, critical Data change alerts



# MET-A-DATA ROADMAP

MM Report

Hide Filter Bar

Request Text:  From Period:  To Period:

3206 Requests »  192 Ready »  825 Error »  960 In Process »  0 Reject »  111 Approved »  1087 Complete

Search here...

Request Text	Material	Created by	Created On	Plant	Material Type	Request status
MAT82		MDMUSER	July 30, 2020	2011	ROH	In Process
MAT82		MDMUSER	July 30, 2020	2011	ROH	In Process
MAT88	MAT107	MDMUSER	August 3, 2020	2011	ROH	Ready
MAT93	MAT0001	MDMUSER	August 3, 2020	1000	ROH	Ready
MATCHAN7	1020006	MDMUSER	August 4, 2020	2011	ROH	Complete
MAT109	1010002	MDMUSER	August 4, 2020	2008	ROH	Complete
MATCHAN9	1010010	MDMUSER	August 4, 2020	2011	ROH	Error
MATCHAN12	1020001	MDMUSER	August 4, 2020	2001	ROH	Complete
MAT120	MATNUM4	MDMUSER	August 6, 2020	2011	ROH	In Process
MAT-126	MATNUM105	MDMUSER	August 6, 2020	2011	ROH	Complete

## Coverage of Master Data

Coverage of GL's, Cost Centers and other Masters.

## Product Robustness

API's to send data to other Systems

More robust Cleansing tools enabled with where used list, data completeness % and possible guess for archival

## Focus on Reporting

More Audit Reports and Dashboards

## Continuous Improvement

Coverage of all Important Master data

Smart Alerts by system from time to time



Your Queries	Our Response
<b>Managed Solution option/Management</b>	Yes
<b>Data access and security</b>	Solution is built using SAP Fiori. So Data Access and Security is guaranteed by SAP
<b>Multi-language support option</b>	Yes
<b>Licensing Model</b>	One Time Fee with AMC. No increase in fee because of licenses
<b>Infrastructure requirement (if Any)</b>	Yes. A separate GW Server might be required.
<b>Multiple Application support (Example - ARIBA, Salesforce, EPM, etc)</b>	Solution is built using ABAP and Frontend is Fiori. APIs can be exposed in case needed.